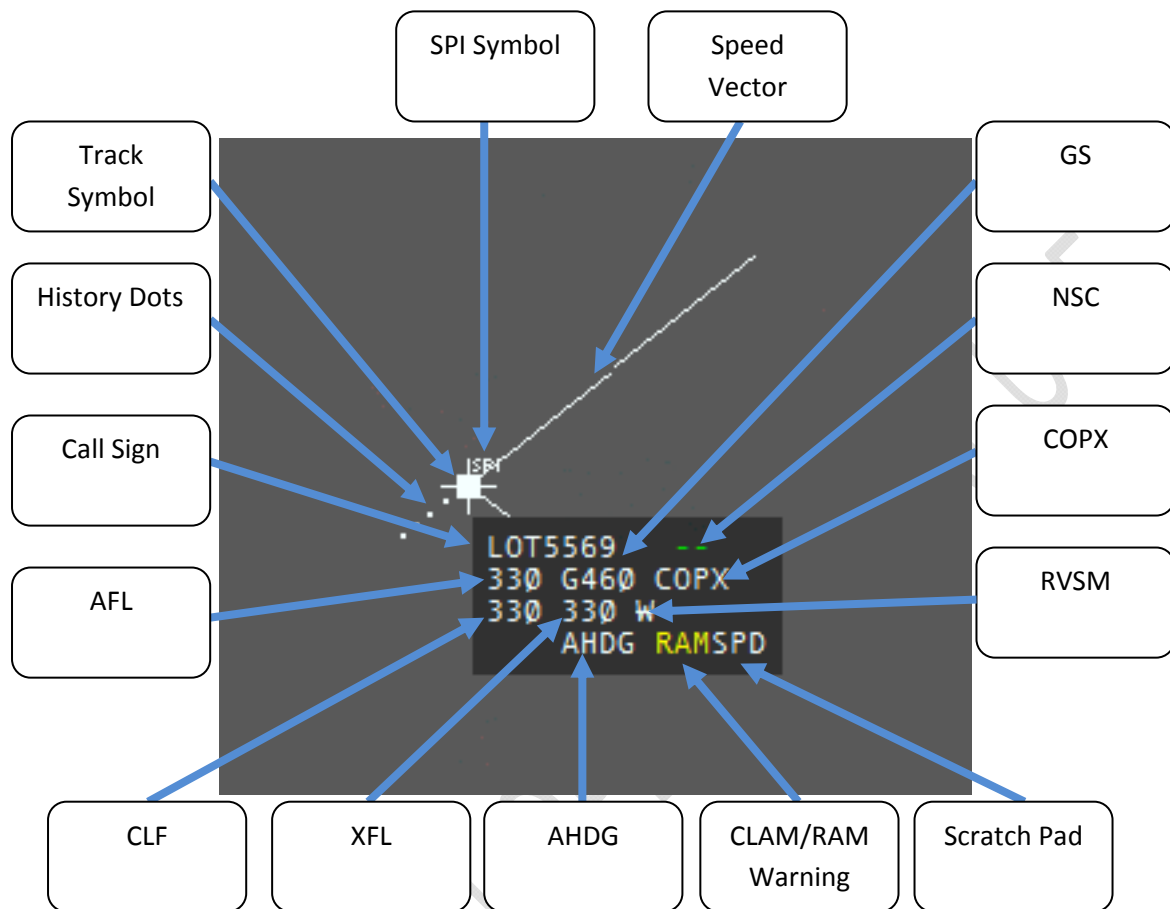




## SATCAS Data Tag Family Manual

Issued by VACCBUL

VATSIM



Element	Description	Left Click	Right Click
Call sign	Shows the Call sign (ICAO) of the track	Assume the track	N/A
NSC	Shows next sector in the path of the track. 3 minutes prior of FIR Border switches to Next Sector Frequency. In case of no next sector shows --	<ul style="list-style-type: none"> <li>- Opens handoff popup menu</li> <li>- Opens assume/refuse popup menu</li> </ul>	N/A
AFL	Actual Flight Level of the track.	<ul style="list-style-type: none"> <li>- Opens temporary altitude popup menu</li> </ul>	N/A
GS	Ground Speed of the track with "G" symbol	N/A	N/A
COPX	Exit Point of the Sector	<ul style="list-style-type: none"> <li>- Opens next points/coordination popup list</li> </ul>	<ul style="list-style-type: none"> <li>- Displays trajectory</li> </ul>
CLF	Cleared Flight Level	<ul style="list-style-type: none"> <li>- Opens temporary altitude popup menu</li> </ul>	<ul style="list-style-type: none"> <li>- Opens Altitude coordination popup menu</li> </ul>

XFL	Exit Flight Level	- Opens Altitude coordination popup menu	N/A
RVSM	Displayed if the track is RVSM capable	N/A	N/A
EMG	Emergency (7700 EMG, 7500 HIJ, 7600 RCF)	N/A	N/A
AHDG	<ul style="list-style-type: none"> <li>- if point coordination has been done, displays the coordinated point</li> <li>- If direct-to-point has been done, displays the direct point</li> <li>- if heading has been assign, displays the heading</li> <li>- If no assignment shows AHDG in highlighted mode</li> </ul>	- Open assign heading popup menu	N/A
CLAM/RAM	CLAM/RAM warring	N/A	N/A
Scratch Pad	Display any Scratch pad information	N/A	N/A

- First line:
  - Callsign;
  - Next sector;
- Second line:
  - mode C altitude/level;
  - Climbing or descending arrow;
  - Ground speed;
  - Sector outbound point
- Third line:
  - Cleared flight level;
  - Coordinated exit level (COO or PCO reminder).
  - RVSM Status
- Fourth line:
  - Emergency alarm (7500 hijacking - HIJ, 7600 communication failure - RCF, 7700 generic emergency - EMG);
  - HDG
  - CLAM/RAM warring
  - Scratch Pad
- When AFL (Actual Flight Level) = CFL (Cleared Flight Level) = XFL (Crossing Flight Level) only AFL will be displayed on the track label.
- When AFL (Actual Flight Level)  $\neq$  CFL (Cleared Flight Level) = XFL (Crossing Flight Level) only AFL and CFL will be displayed on the track label.
- The Next Sector and the Exit Point are visible only in highlight mode.